

220kg Heavy Duty Steel Wheelchair 60cm



HANDLING AND SAFETY TIPS

Warning: Wheelchairs are heavy items – ensure proper lifting techniques to avoid injury. Ask for assistance whenever possible.

Be sure your weight is within the load capacity of the unit and the wheelchair is suitable for your needs and abilities. Seek the advice of a suitably trained therapist or carer if uncertain.

Before using the wheelchair, always check to ensure product is in good working condition.

Check brakes are in working order.

Ensure both brakes are applied before getting in or out of the wheelchair.

DO NOT stand on the footplates when getting in or out of the wheelchair

DO NOT overload the wheelchair

DO NOT use the wheelchair with the back folded or hang objects on the backrest – this can alter the centre of gravity and could cause the chair to tip backwards

Stability

The wheelchair is designed to be safe and stable if the centre of gravity is maintained while going about normal activities. Care must be taken while performing activities that shift the centre of gravity in the chair. Never reach so far that require you to shift in the seat or bend over out of the chair.

Ramps and Inclines

Be sure of your own capabilities, limitations and strength before attempting to go up a ramp. Correct techniques on ramp negotiation should be demonstrated to you by a qualified professional. Avoid changing direction when going down an incline as this could result in instability or tipping over. Seek assistance where possible

Caregivers should navigate downward slopes with the wheelchair turned to face up slope and back the chair downwards gradually.

FEATURES

- Powder coated steel frame
- Flip up armrests
- Double cross bar
- Swing away footrests
- Flip up height adjustable footplates
- Nylon upholstery
- 3cm foam padded seat and backrest
- Heavy duty PVC front castors
- Quick release thick spoke rear wheels with solid PU tyre
- Anti-tippers
- Conditional warranty applies

SPECIFICATIONS

Seat width:	60cm
Seat height:	50cm
Seat depth:	43cm
Backrest height:	44cm
Armrest height:	18cm
Overall width:	79cm
Folded width:	32cm
Overall length:	106.5cm
Overall height:	96.5cm
Front castor:	20cm x 5cm
Rear wheel size:	59.5cm x 3cm
Weight capacity:	220kg
Unit weight:	21kg

CARE AND MAINTENANCE

- Check condition regularly for wear and tear.
- Do not use if product shows signs of damage or corrosion.
- Always check bolts and nuts are securely fastened.
- Clean using a slightly damp cloth and wipe dry.
- Lubricate moving parts. We recommend a silicone based lubricant which will also assist in water / moisture displacement and can help reduce rust / corrosion.
- It is recommended that the wheelchair be serviced at least once a year by a mobility aid specialist.





- 1. Flip-up armrests
- 2. Armrest release latch
- 3. Hand brake
- 4. Rear wheel quick release button
- 5. Anti-tipper
- 6. Swing-away footrest
- 7. Footplate height adjustment bolt
- 8. Flip-up footplates

UNFOLDING the wheelchair (Figure A)

Push down on the side rails of the seat (9) until frame is fully extended and clicks onto seat guides.

FOLDING the wheelchair (Figure A)

Step 1: Turn up both footplates (8). (Remove footrests to pack smaller)
Step 2: Pull up from centre of seat (10) and fold from the sides to close.

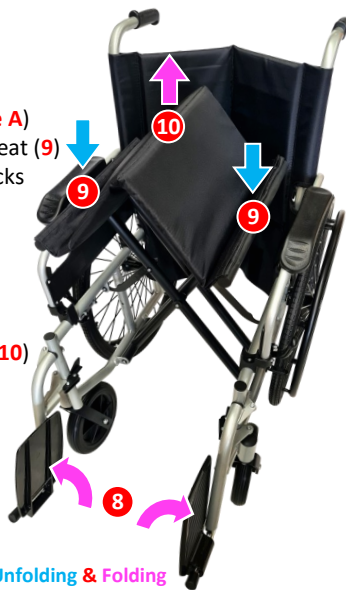


Figure A. Unfolding & Folding

FLIP UP ARMRESTS (Figure B)

a Depress release lever (2b). Rotate arm to the back of wheelchair.

b To return armrest to down position, push armpad down until release latch (2b) firmly locks into place (2c).

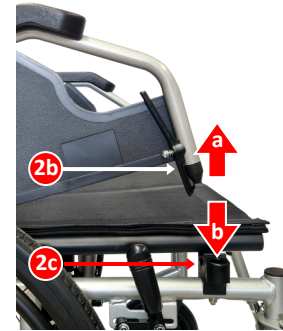


Figure B. Flip Up Armrests

BRAKE SYSTEM (Figure C)

Important: Ensure both brakes are applied before getting in or out of the wheelchair.

User Hand brake (Figure C): Push the brake handle (3) forward (away from rear wheel) to engage park brake. Pull back (3) to release.

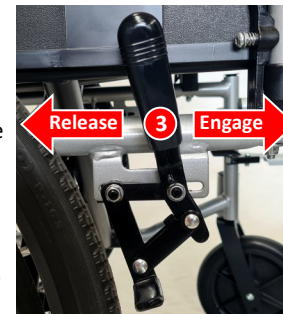


Figure C. Hand Brake

Important: When not in use, DO NOT leave hand brake (3) engaged as this may cause permanent indents on the tyre.

REAR WHEEL (Figure D)

Attaching: Press the Quick Release button (4) while inserting wheel's axle, ensure the wheel locks in place before use

Removal: Press the Quick Release button (4) and remove wheel.



Figure D. Quick Release Wheel

FOOTRESTS (Figure E)

Installation

- a. Place swing-away pivot pin into the locating hole on top of the hanger mount with the footrest facing outward from frame (6a).
- b. Rotate the footrest inward until latch plate locks (6b) into place on locking bolt.

Removal

- a. To remove footrest, pull quick-release lever (6b).
- b. Rotate footrest outward and lift off pivot pin.



Figure E. Swing Away Footrests

ADJUSTING FOOTPLATE HEIGHT (Figure F)

Step 1. Remove the locking bolt at the back of the stem (7) with tool provided.
Step 2. Slide tubing and adjust the footplate to a suitable height (4 settings).
Step 3. Return the locking bolt and tighten to fix in place.



Figure F. Footrest height adjustment