

Before use, always check product is in good working condition.
Check regularly for wear and tear.

Ensure your weight is within the weight capacity of the unit and
the product is suitable for your needs and abilities.
Seek the advice of a suitably trained therapist or carer.

The rollator should be used with care and safety in mind.
This product is not a toy. Keep away from children.

Care must be taken to ensure stability:

- All wheels must be in contact with the ground.
- Avoid tilting or leaning over too far.
- DO NOT use as a wheelchair or to transport someone.
- Lock handbrakes when sitting, while seated and getting up.
- Do not hang anything on the handlebars.

DO NOT USE if the walker shows signs of damage, corrosion or rust

- Regularly check that all bolts and fasteners are secure
- Lubricate moving parts. A spray lubricant will also assist in water/moisture displacement and protect from corrosion.
- Clean using a slightly damp cloth and wipe dry.
- DO NOT use abrasive or solvent cleaning products.
- To prevent rust - Do not submerge the product in water and make sure to dry product completely before storing.
- Store in a dry place.

SPECIFICATIONS

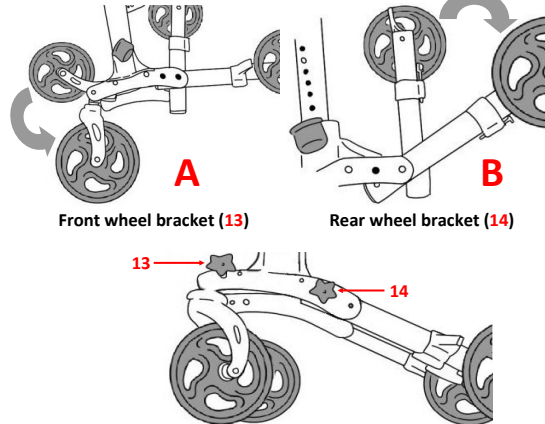
Gutter Arm Height:	93cm – 111cm
Seat Height:	54cm
Seat Width:	45.5cm
Seating Width	47cm
Overall Depth	73cm (front castors inward)
Overall Width:	64cm
Width Between Gutter Arms	38cm
Wheel Size:	8" x 1.25" PVC
Weight Capacity:	136kg
Net Weight:	9.5kg





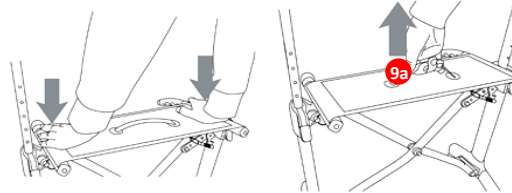
1. Length adjustable handles
2. Handbrake lever
3. Gutter arm support
4. Handle length adjustment
5. Gutter arm stem
6. Back rest
- 7a. Cane holder strap (a) base (b)
8. Hooks for removable storage bag
9. Seat & folding strap (9a)
10. Height adjustment
11. Swivel front wheel
12. Rear wheel with brake system
13. Front wheel bracket & locking knobs
14. Rear wheel bracket & locking knobs

MAIN ROLLATOR FRAME



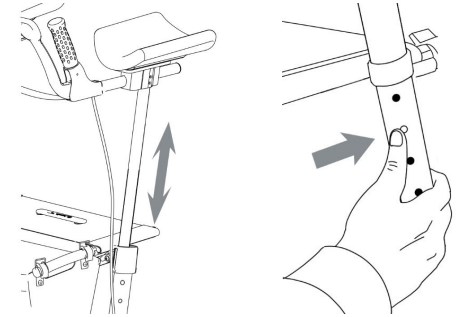
- A. Unfold front wheel bracket of the walker to align the holes, insert screw knob (13) and tighten. Repeat for other side
- B. Unfold rear wheel bracket of the walker, align the holes, insert screw knob (14) and tighten. Repeat for other side

UNFOLDING (OPENING) & FOLDING (CLOSING) FRAME



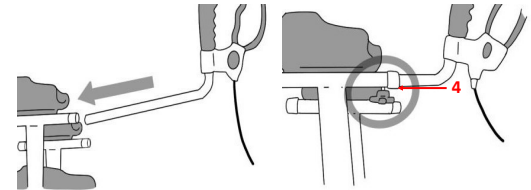
- UNFOLD the rollator by pressing down on sides of seat (9) until it clicks securely into position.
- FOLD by pulling up strap on seat (9a) and press in sides of frame.

INSTALLING GUTTER ARMS & HEIGHT ADJUSTMENT



While pressing silver button, insert the stem (5) into main rollator frame and position to suitable height by locking silver button at nearest hole (10). Repeat for other side to same height position.

INSTALLING HANDLES & LENGTH ADJUSTMENT



While pressing silver button, insert handle bar (1) into tube of gutter arm stem (5); position to required length by locking silver button at nearest hole; secure by tightening bolt (4). Repeat for other side to same length.

HANDBRAKE & PARKING

Squeeze brakes (2) gently to reduce speed and to stop.

Push brake handles forward to activate park brake (a faint click will be heard when engaged). Pull back on brakes to release.